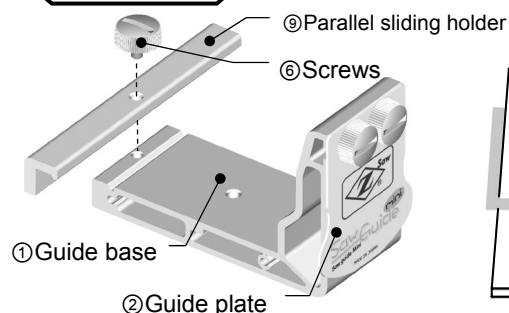
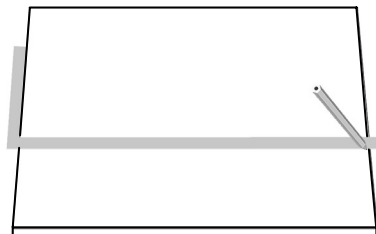


Section 4

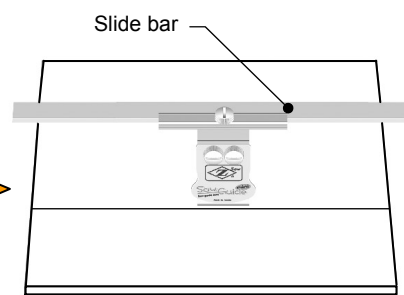
Wide board



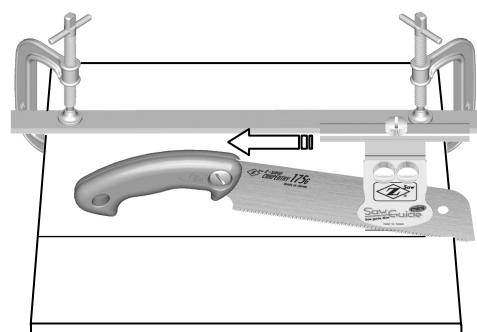
Detach the orange hand grip and attach the Parallel sliding holder with a screw.



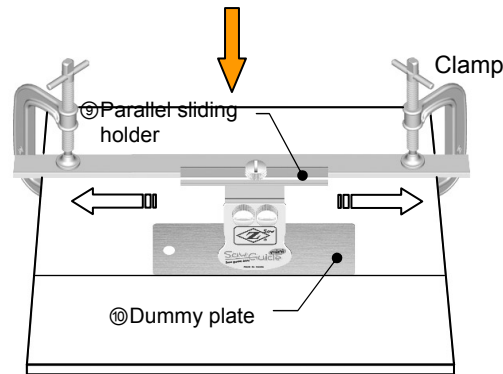
Mark the position where you want to cut.



Prepare a straight edge or a straight wooden piece to be used as Slide bar.



Replace Dummy plate with Z-Saw Carpentry 175G, then start sawing by moving the guide backward. Ensure that the parallel sliding holder remains firmly against the slide bar.

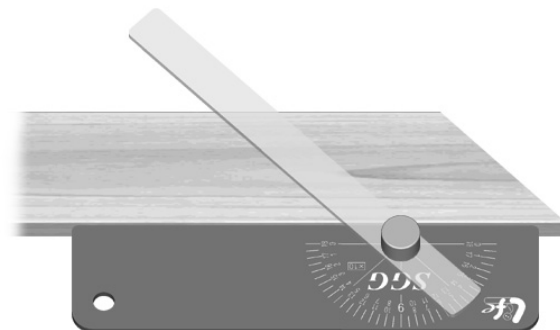


Insert Dummy plate into the gap between Guide base and Guide plate, and adjust the position of the Guide and Slide bar to the mark on the board. Fix Slide bar to the board with clamps.

Optional extra

Saw guide gauge

This is a protractor for checking angles or marking out.



Set the angle with the centre screw.

**Okada Hardware Mfg.Co.,Ltd.**  
 561 Omura, Miki-shi, Hyogo, Japan 673-0404  
 TEL: 81-794-83-1111 / FAX: 81-794-83-5111  
 URL: <http://www.z-saw.co.jp> E-mail: [webmaster@z-saw.co.jp](mailto:webmaster@z-saw.co.jp)

ME20041



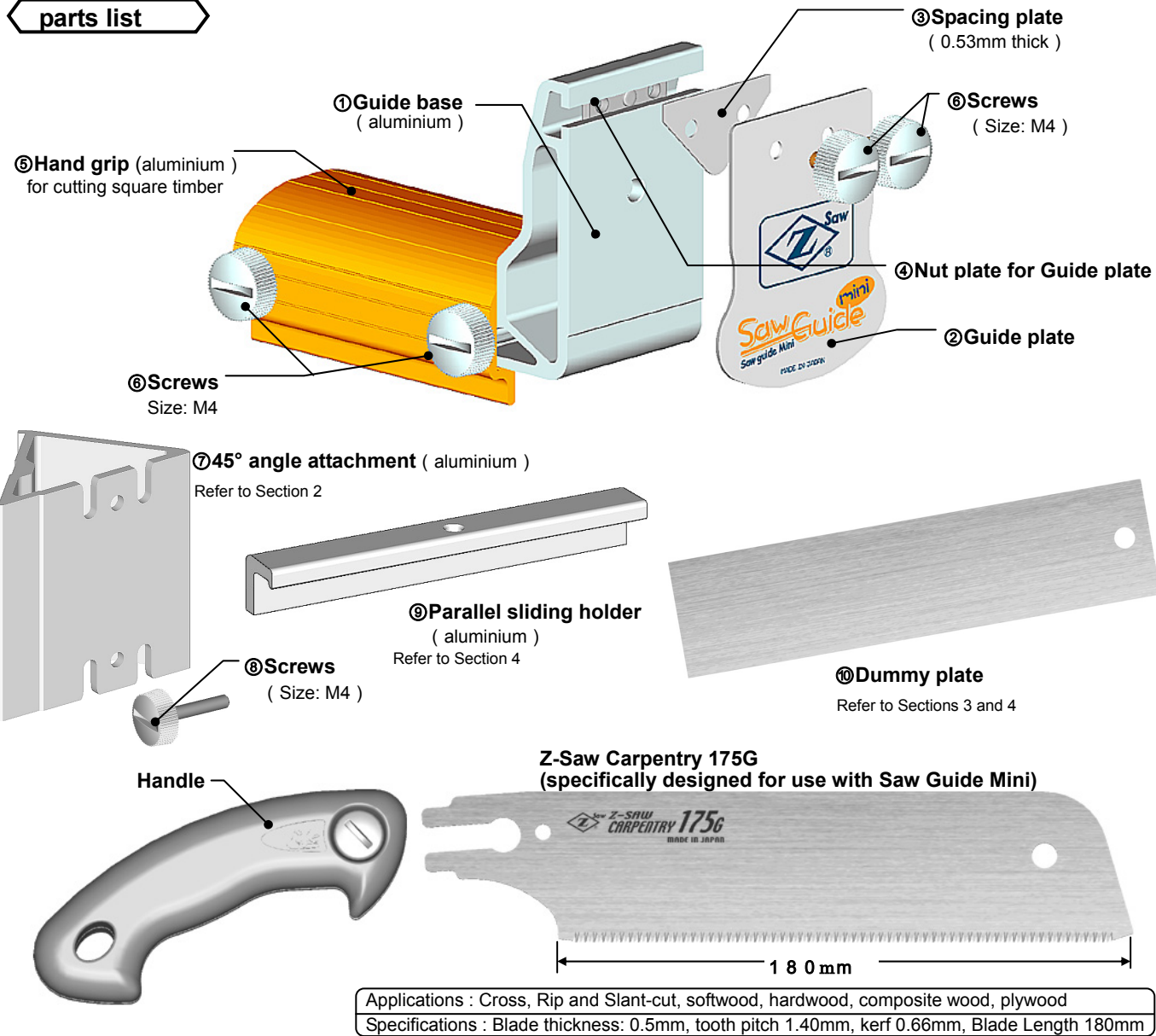
# Instruction Sheet

## Saw Guide mini

Saw guide Mini

Introduction

parts list



Applications : Cross, Rip and Slant-cut, softwood, hardwood, composite wood, plywood  
 Specifications : Blade thickness: 0.5mm, tooth pitch 1.40mm, kerf 0.66mm, Blade Length 180mm

Thank you for your purchase of this Saw Guide Mini.  
 Please read these instructions carefully and store them safely for future reference.

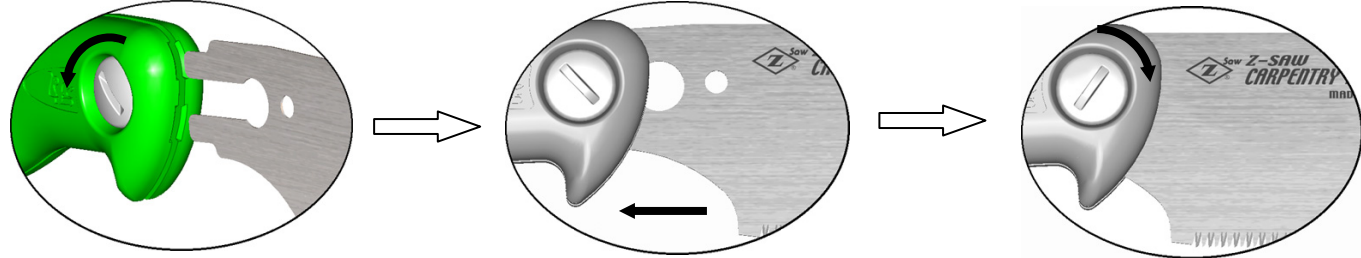
**Caution :**  
 Do not drop the guide or the saw as damage to them may occur.  
 Do not overtighten screws, as this may cause damage to screws, nuts or the guide.  
 Saw Guide Mini cannot be used with double-edged saws or saws which have blades thicker than 0.5mm.  
 Always use your Saw Guide Mini with Z-Saw Carpentry 175.  
 Do not use this product for any purpose for which it was not intended.

**Notice :**  
 Specifications may change without notice to improve quality.  
 Copyright © 2003 Okada Hardware Manufacturing Company Limited. All rights reserved.

## How to change blades

**Caution:** Blade edges are very sharp. Always wear gloves or wrap the blade with a cloth.

### How to attach blade



Insert a blade into the gap in the handle until the small hole in the blade is completely hidden within the handle. Make sure that the blade is fitted correctly and tighten screw.

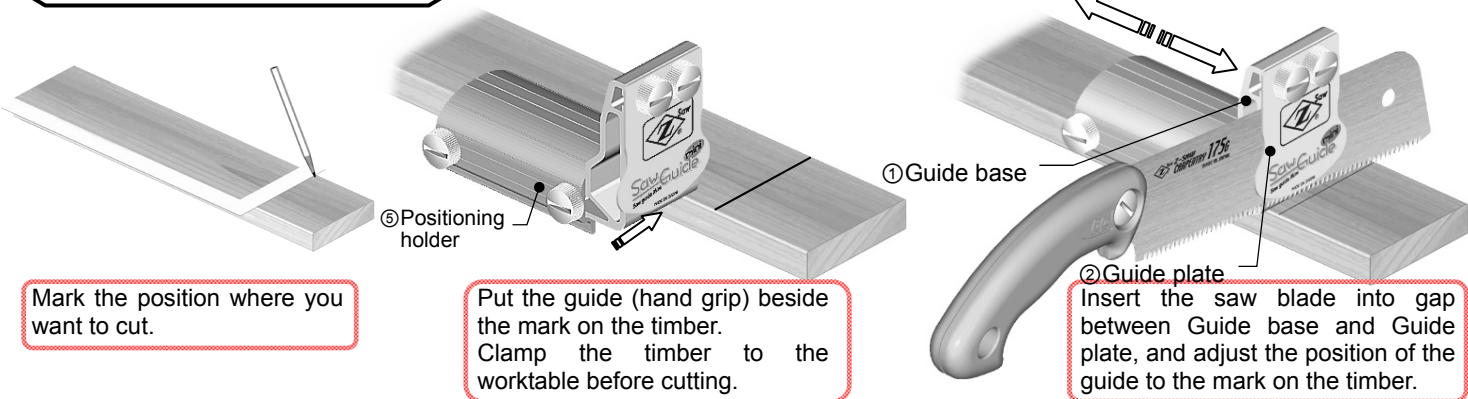
### How to detach blade

Loosen screw with a coin or a screwdriver. ( Blade can be replaced without completely removing the screw from the handle. )

## Section 1

On sawing, keep the Positioning holder contacting firmly to the lumber.

### Square cut (square timber)

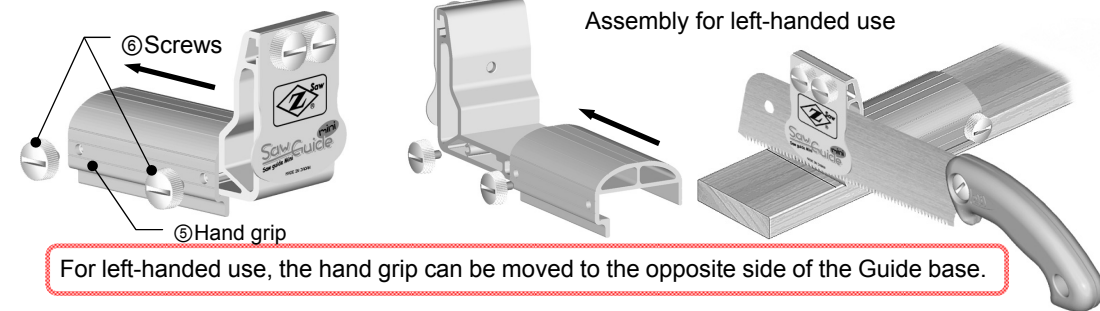


Mark the position where you want to cut.

Put the guide (hand grip) beside the mark on the timber. Clamp the timber to the worktable before cutting.

Insert the saw blade into gap between Guide base and Guide plate, and adjust the position of the guide to the mark on the timber.

Assembly for left-handed use

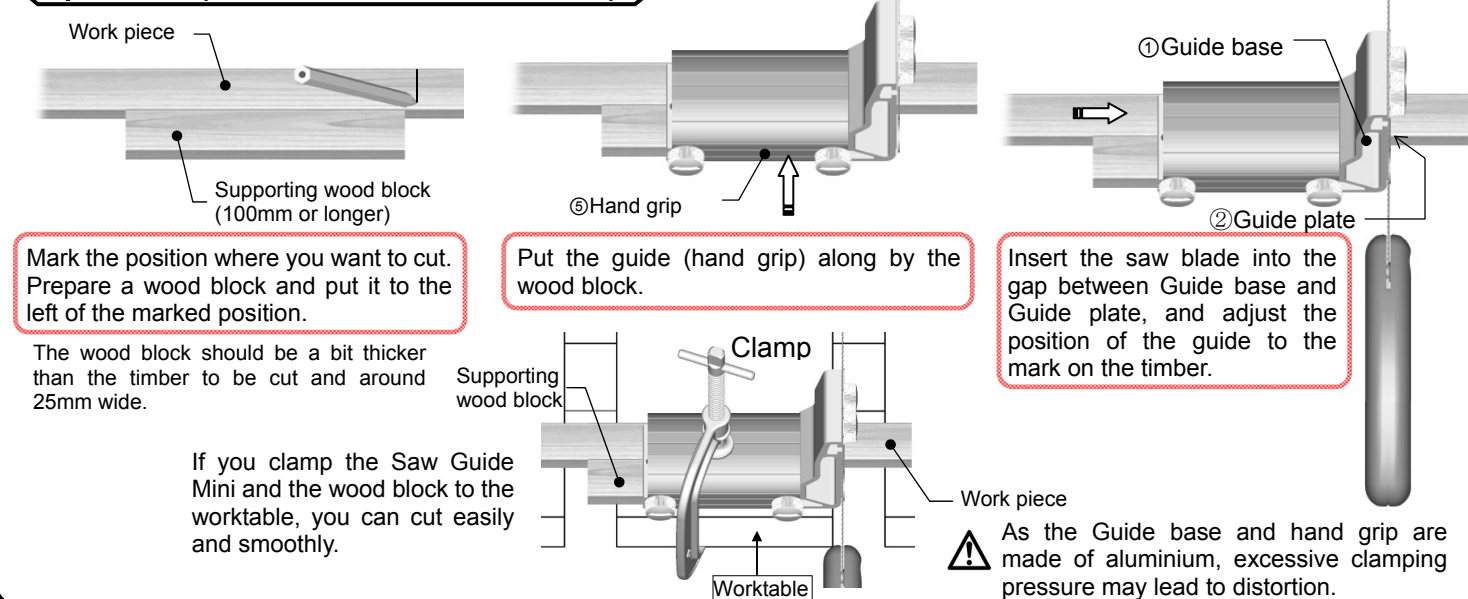


For left-handed use, the hand grip can be moved to the opposite side of the Guide base.

### Sawing tips.

Hold the saw handle lightly with your forefinger riding on the side. Pull the saw with a light downward pressure in a full stroke. Lightly lift the saw on the return stroke so as to minimise pressure on cutting teeth. Downward pressure can be adjusted with your forefinger.

### Square Cut (timber less than 25mm wide.)



Mark the position where you want to cut. Prepare a wood block and put it to the left of the marked position.

The wood block should be a bit thicker than the timber to be cut and around 25mm wide.

If you clamp the Saw Guide Mini and the wood block to the worktable, you can cut easily and smoothly.

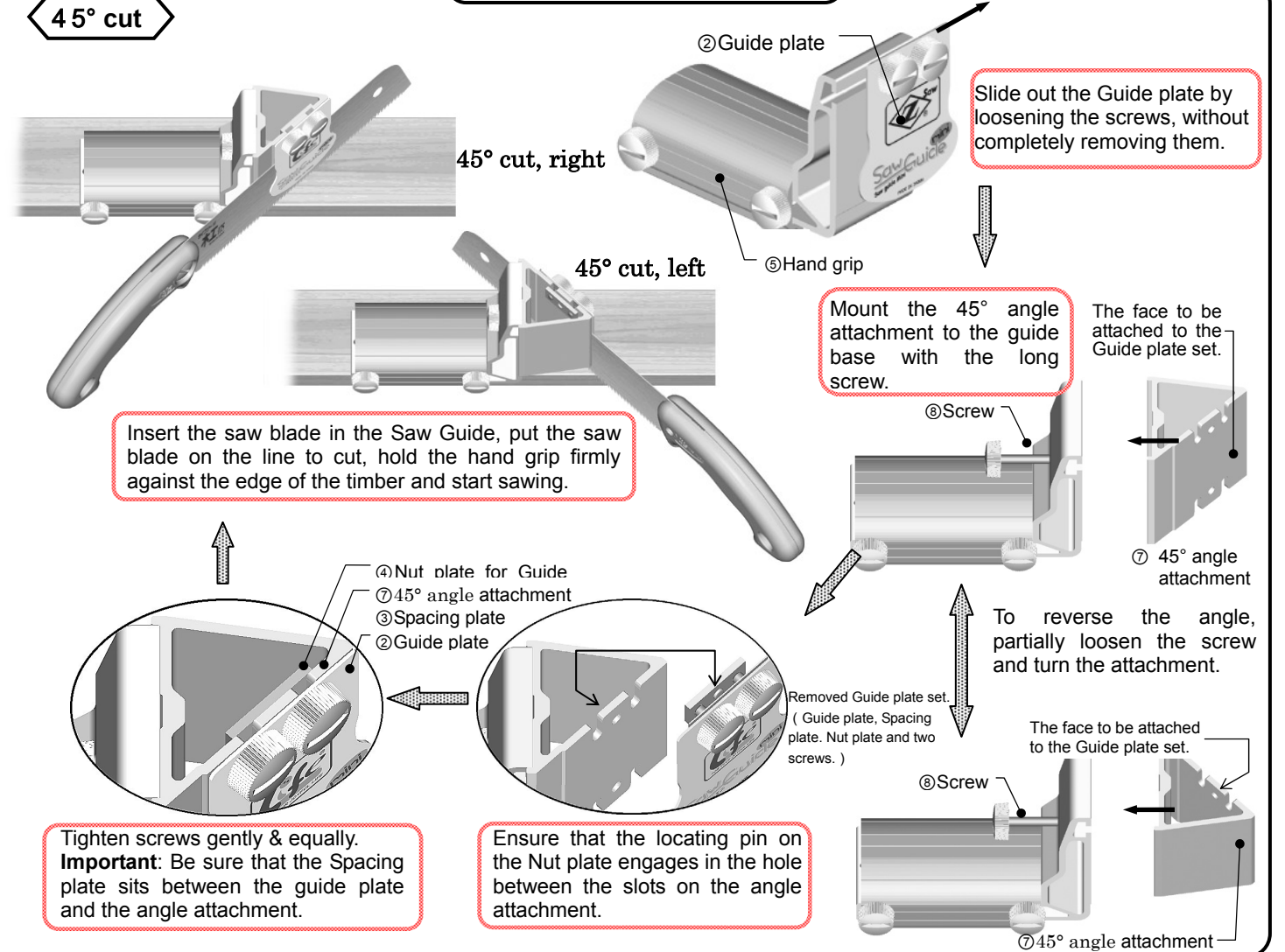
Put the guide (hand grip) along by the wood block.

Insert the saw blade into the gap between Guide base and Guide plate, and adjust the position of the guide to the mark on the timber.

As the Guide base and hand grip are made of aluminium, excessive clamping pressure may lead to distortion.

## Section 2

### 45° cut



Slide out the Guide plate by loosening the screws, without completely removing them.

Mount the 45° angle attachment to the guide base with the long screw.

The face to be attached to the Guide plate set.

Insert the saw blade in the Saw Guide, put the saw blade on the line to cut, hold the hand grip firmly against the edge of the timber and start sawing.

Tighten screws gently & equally. **Important:** Be sure that the Spacing plate sits between the guide plate and the angle attachment.

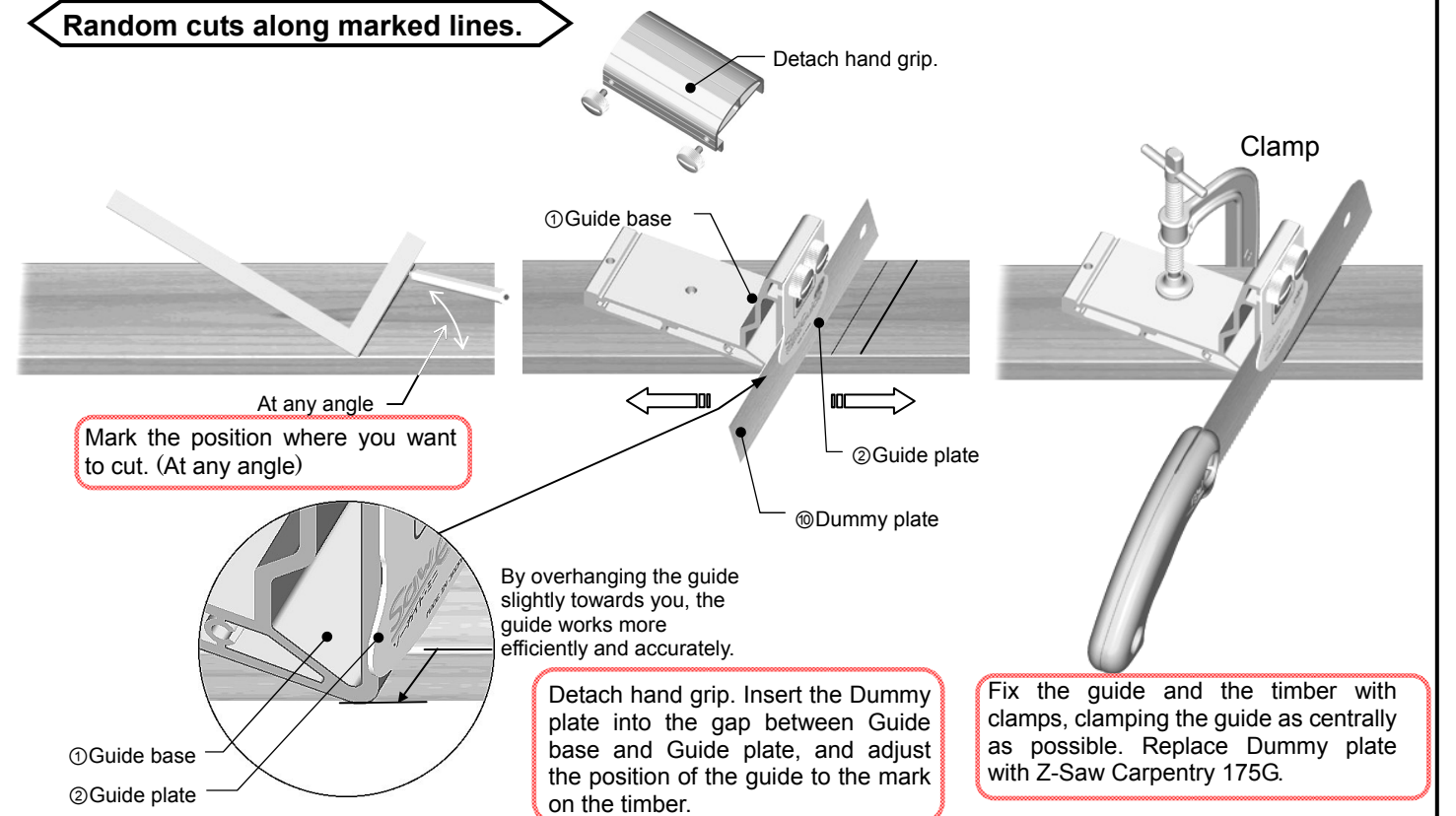
Ensure that the locating pin on the Nut plate engages in the hole between the slots on the angle attachment.

To reverse the angle, partially loosen the screw and turn the attachment.

Removed Guide plate set. ( Guide plate, Spacing plate, Nut plate and two screws. )

The face to be attached to the Guide plate set.

### Random cuts along marked lines.



Mark the position where you want to cut. (At any angle)

By overhanging the guide slightly towards you, the guide works more efficiently and accurately.

Detach hand grip. Insert the Dummy plate into the gap between Guide base and Guide plate, and adjust the position of the guide to the mark on the timber.

Fix the guide and the timber with clamps, clamping the guide as centrally as possible. Replace Dummy plate with Z-Saw Carpentry 175G.